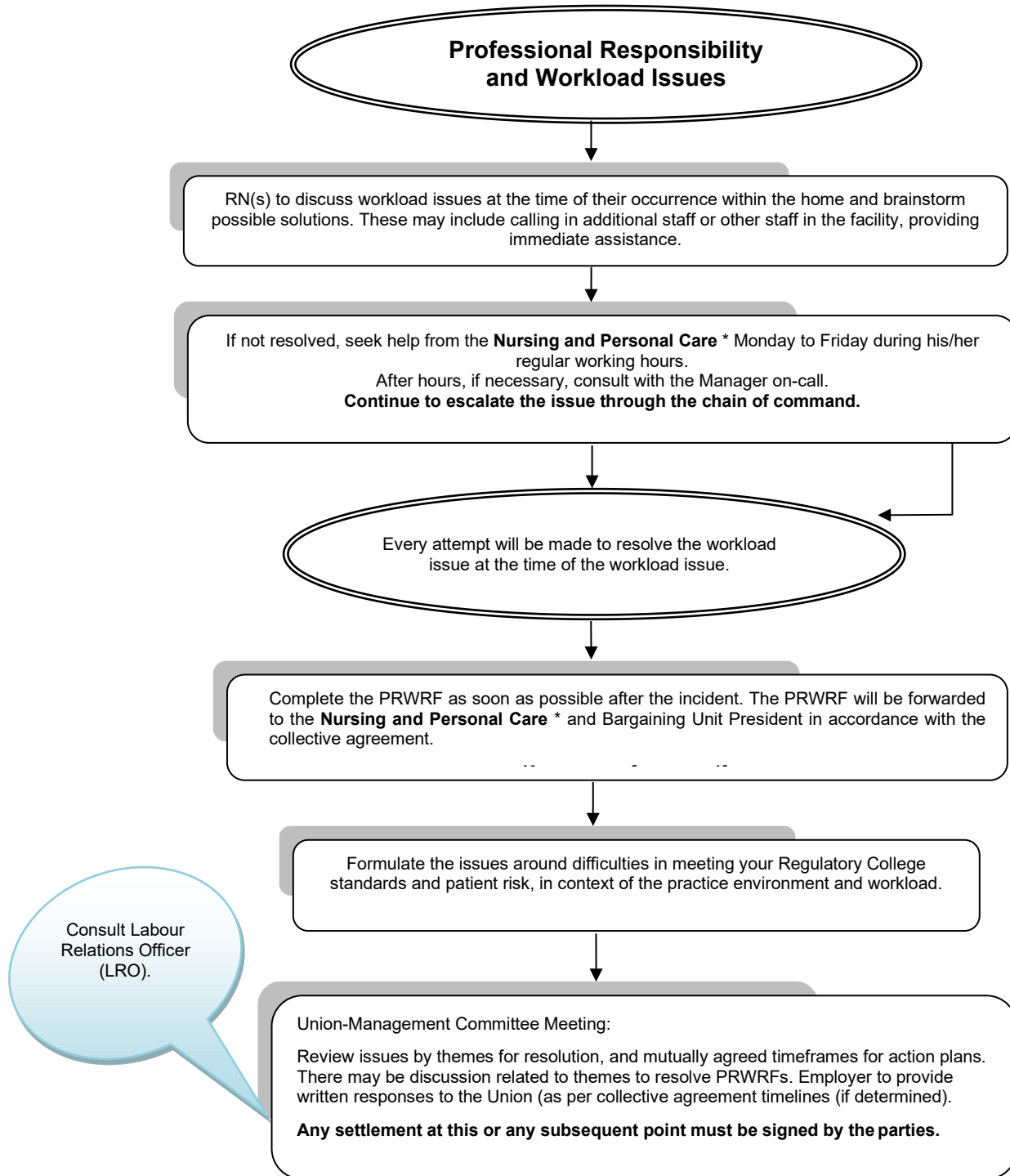


# ONA Long-Term Care Professional Responsibility and Workload Decision Tree - A Strategy for Resolving Workload Issues



Note: \*as designated by the collective agreement or by the employer

Continued on Page 2 →

# ONA Long-Term Care Professional Responsibility and Workload Decision Tree – A Strategy for Resolving Workload Issues

Continued from Page 1

Upon request of Bargaining Unit President/PRW Representative, the LRO attends Union-Management Committee meeting.

